

ROAD INDEX

1	A	AGLER RD. F6-G6	J cont.	S cont.
			K	
2	B		L	T THRASHER RD. C7 TILDEN RD. D5-D7 TAVERN RD. F1-G3
	C	CLARIDON TROY RD. DI-D7		
	D		M MAIN MARKET RD. A4-G5 MUMFORD RD. F1-F7	U UDALL RD. F7
3	E		N NASH RD. D4-G4	V
	F	FOX RD. A7-B5		W WINAGLE RD. B6
	G		P PATCH RD. D2-G2	X
	H	GROVE RD. E7-G6		
4	I		Q	Y
	J	HOOVER RD. D6-F6		
	K		R RAPIDS RD. C1-B7	Z
5	L			
	M		S SHAW RD. A4-A6 SHEDD RD. F1-G1 SNOW RD. A1-A2 STAFFORD RD. A2-B2	
6	N	JUG ST. E1-E7		
	O			
	P			

- ① TROY ELEMENTARY SCHOOL
- ② AMISH SCHOOL
- ③ TROY CONGREGATIONAL CH.
- ④ TROY BAPTIST CHURCH
- ⑤ SHRINE OF OUR LADY OF MARIAPOCH
- ⑥ BURROUGHS CEMETERY
- ⑦ TROY CEMETERY
- ⑧ PATCH CEMETERY
- ⑨ MUMFORD CEMETERY
- ⑩ POPE HOME
- ⑪ TROY COMMUNITY HOUSE

TROY TOWNSHIP

SCALE: 1"=2000'
 ROBERT E. PHILLIPS
 BEAUGA COUNTY ENGINEER

--- UNPAVED ROADS
 --- PAVED ROADS
 --- TOWNSHIP LINE
 --- COUNTY LINE

*done
5-93*

BURTON TOWNSHIP

AUBURN TOWNSHIP



233-275
187-211 1A
w/3 Greenway

R.M. ZABROSKY 2A
531-1217
R.M. ZABROSKY 2A
531-1219
R.M. ZABROSKY 2A
531-1221
259-330 2A
J.H. DOLEZAL
712-540 2A
J.B. KATRONICK
413-135 2A
T.H. SHORRSH
CLAS
J.D. WAGNER 2A
615-1222-1223
615-1224
576-635
V.G.T. MORAGZ
601-792 2A
D.L.S.M.P. KULCHAR
247-486
69731
378A 2A
247-487
J.A.
E. BLACKBURN
520-413

16671

PRINTED
JUL 17 1984
GEORGIA COUNTY ENGINEER



SCALE 1" = 300'
JAN. 1984

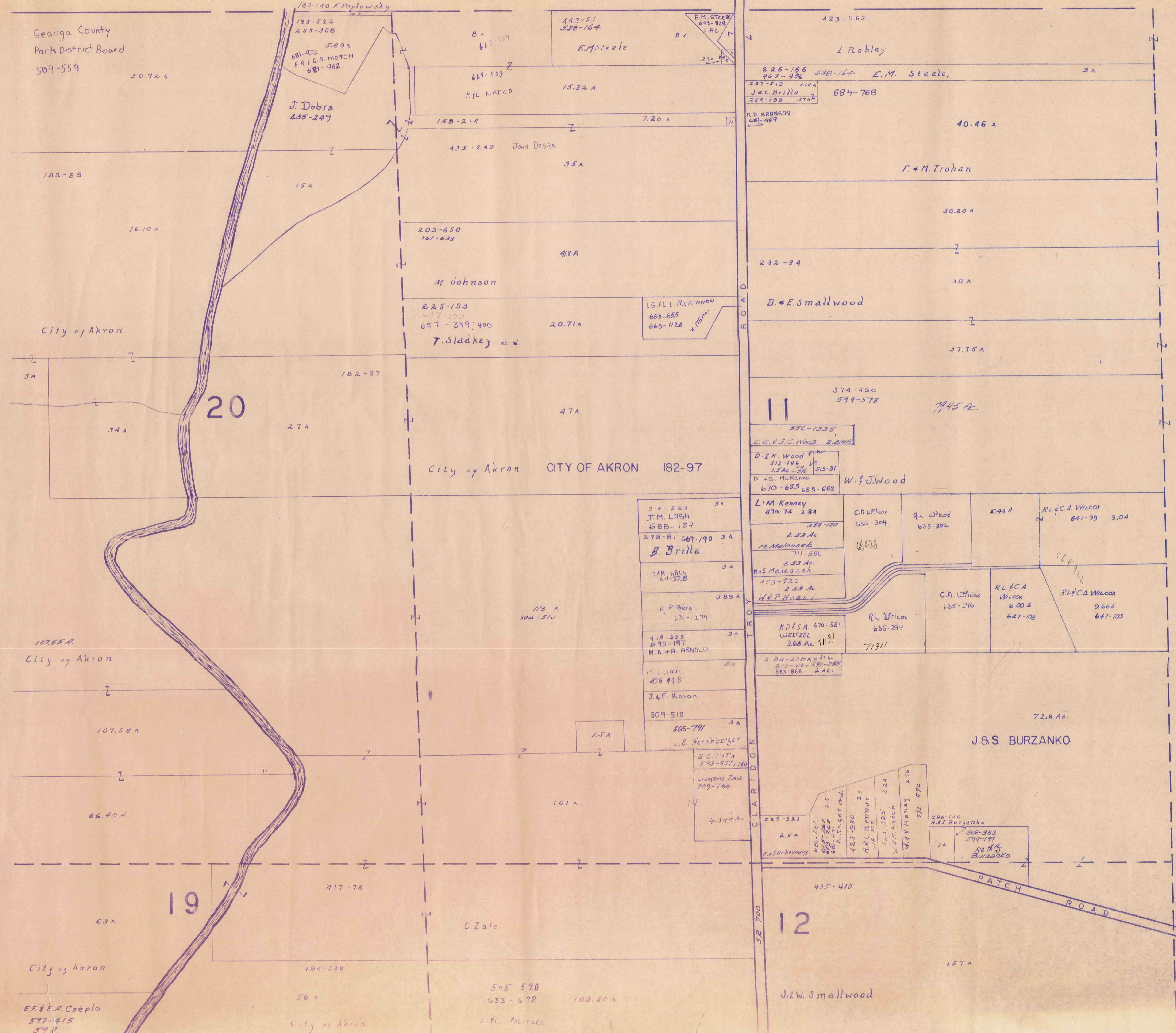
A	B	C	D
E	F	G	H
I	J	K	L
M	N	O	P

22

19

BURTON

TOWNSHIP



PRINTED
JUL 17 1984
GENEVA COUNTY ENGINEER



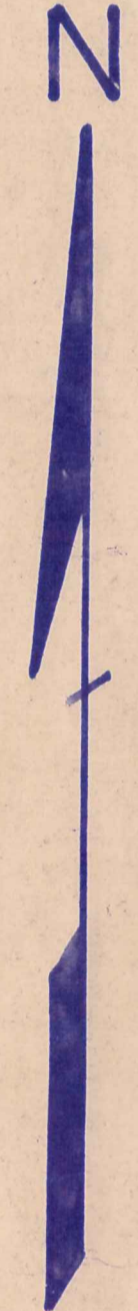
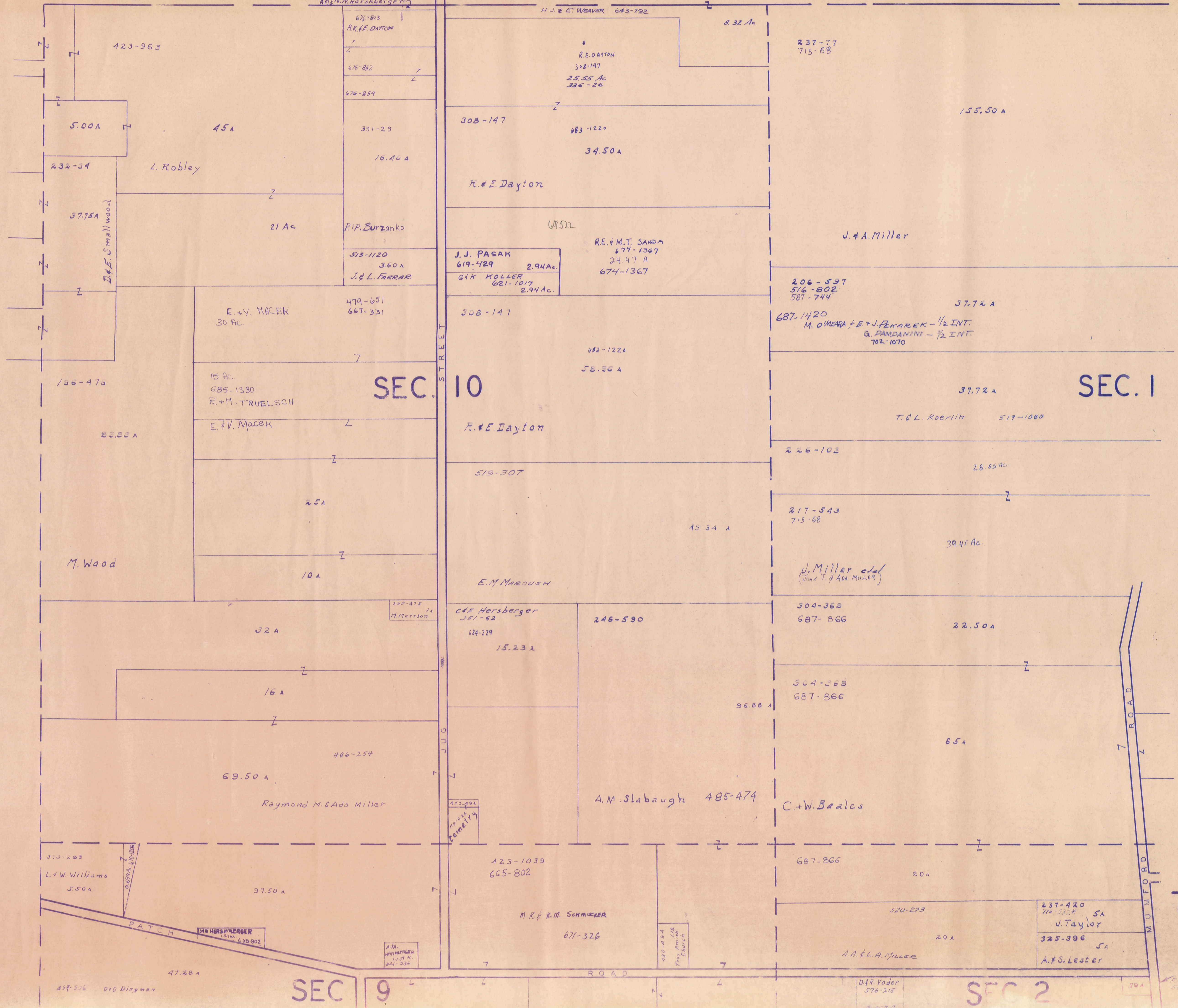
SCALE 1"=300'

JAN. 1984

A	B	C	D
E	F	G	H
I	J	K	L
M	N	O	P

TROY TW

BURTON TOWNSHIP



SCALE 1" = 300'
JAN. 1984

A	B	C	D
E	F	G	H
I	J	K	L
M	N	O	P

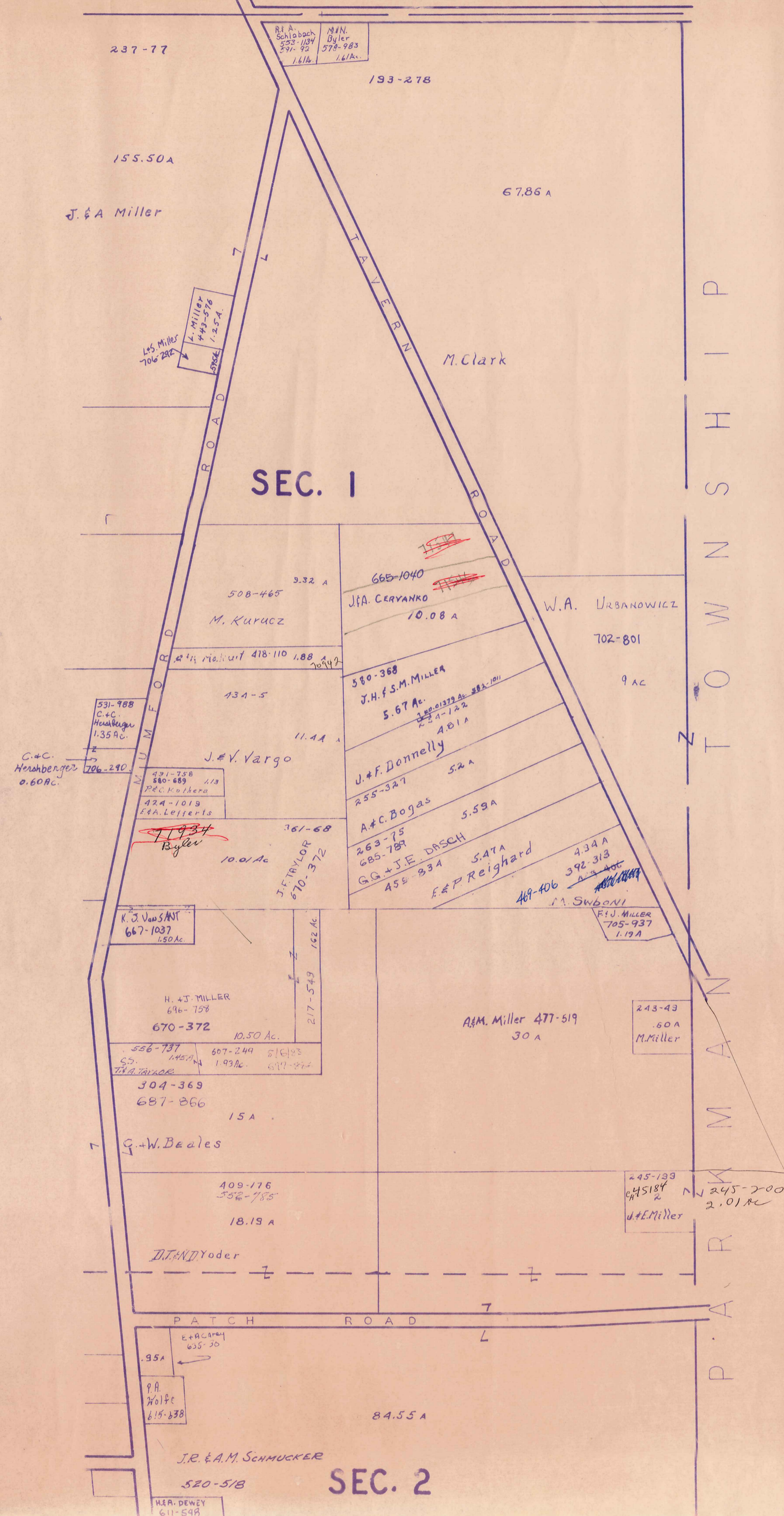
TROY TWP

PRINTED
JUL 17 1984
GENESSEE COUNTY ENGINEER

SEC 9

SEC 2

BURTON TOWNSHIP



SCALE 1" = 300'
 JAN. 1984

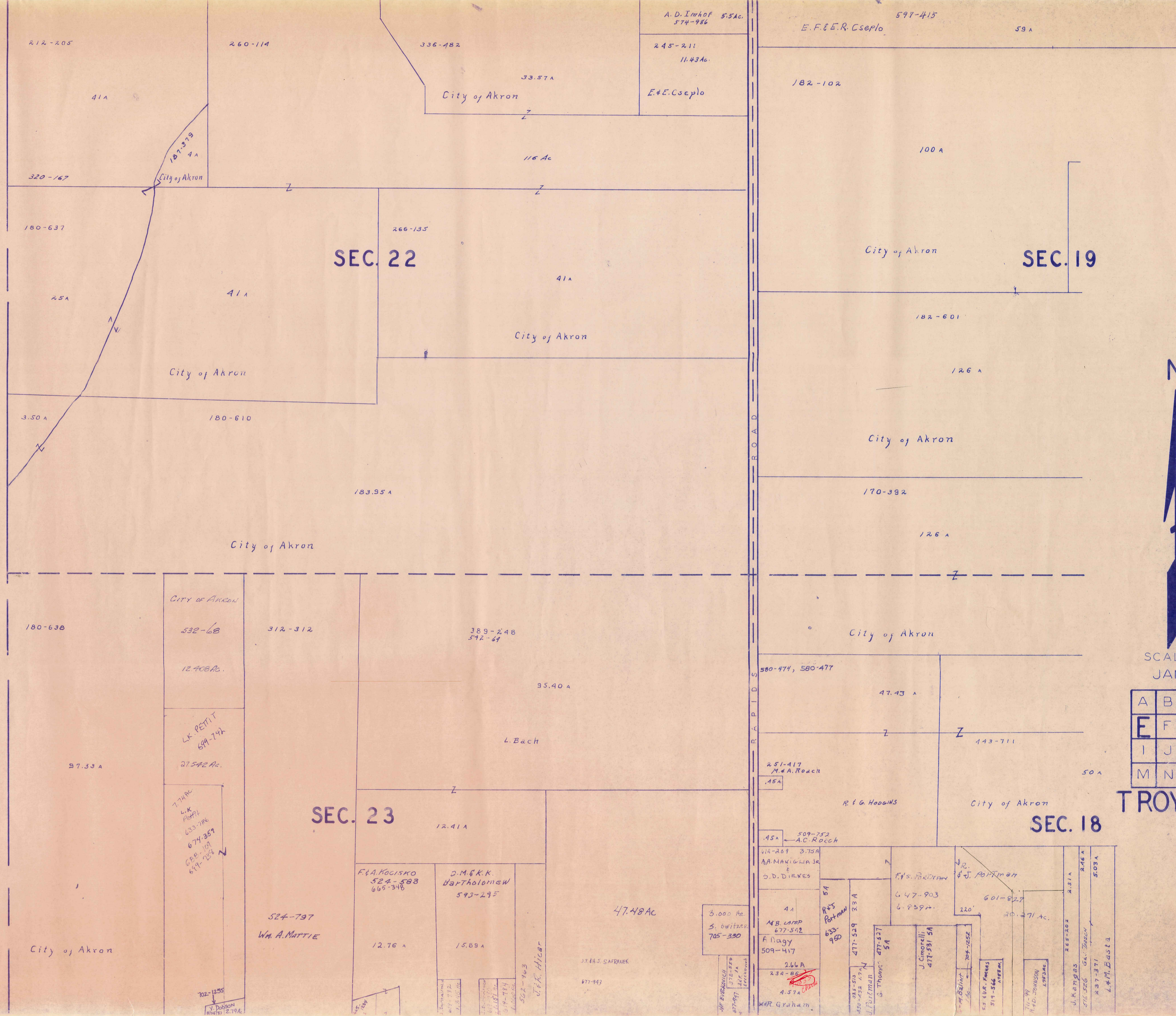
A	B	C	D
E	F	G	H
I	J	K	L
M	N	O	P

PRINTED
 JUL 17 1984
 BERNO COUNTY ENGINEER

T ROY TWP

T
O
W
N
S
H
I
P

A
U
B
U
R
N

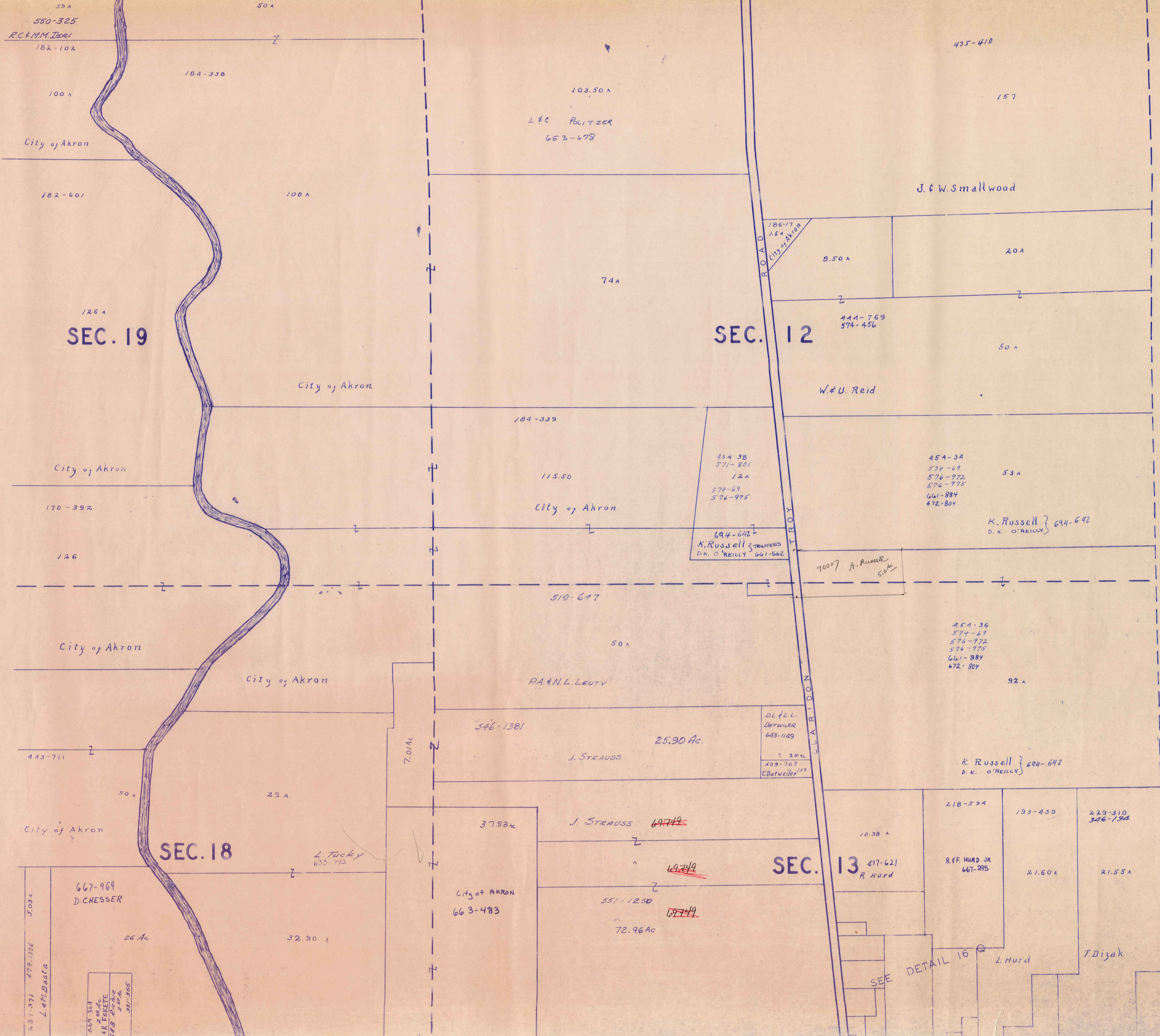


SCALE 1"=300'
JAN. 1984

A	B	C	D
E	F	G	H
I	J	K	L
M	N	O	P

TROY TWP

PRINTED
JUL 17 1984
GENUINA COUNTY ENGINEER



SCALE 1" = 300'
JAN. 1984

A	B	C	D
E	F	G	H
I	J	K	L
M	N	O	P

TROY TWF

PRINTED
JUL 17 1984
GEauga COUNTY ENGINEER

SEE DETAIL 16

55A
550-325
R.C. & M.M. Zeeb
182-102

SEC. 19

SEC. 12

SEC. 18

SEC. 13

5.03A
679-1306
L. W. Barst
469-324
518-284
S. R. FIKETE
518-284
2.50 Ac
591-365

D.L. & L.L. DETWILER
643-1129
3.01 Ac
409-707
C. Detweiler

694-642
K. Russell
D.K. O'REILLY
661-562

454-34
574-69
576-972
576-975
661-884
672-804

454-36
574-69
576-972
576-975
661-884
672-804

K. Russell
D.K. O'REILLY
694-642

218-594
R.F. HURD JR
667-215

193-439
2.160A

229-310
306-194
21.55A

City of AKRON
663-483

J. STRAUSS
69749

551-1230
72.96 Ac
69749

7.01 Ac

25.90 Ac.

546-1381

P.A. & N.L. LEUTY

519-647

115.50
City of Akron

184-339

74A

103.50 A
L & C POLITZER
653-678

J. & W. Smallwood

435-410

157

City of Akron

182-601

100A

184-338

100A

126A

City of Akron

170-392

126

City of Akron

City of Akron

443-711

50A

29A

City of Akron

L. TUCKY
633-782

26 Ac

32.90 A

186-17
1.5A
City of Akron

8.50A

20A

444-769
574-456

50A

W. & U. Reid

694-642
K. Russell
D.K. O'REILLY
661-562

7000' A. Russell
5.0 Ac

K. Russell
D.K. O'REILLY
694-642

454-36
574-69
576-972
576-975
661-884
672-804

92A

D.L. & L.L. DETWILER
643-1129

J. STRAUSS

K. Russell
D.K. O'REILLY
694-642

218-594
R.F. HURD JR
667-215

193-439
2.160A

229-310
306-194
21.55A

City of AKRON
663-483

J. STRAUSS
69749

551-1230
72.96 Ac
69749

7.01 Ac

25.90 Ac.

546-1381

P.A. & N.L. LEUTY

519-647

115.50
City of Akron

184-339

74A

103.50 A
L & C POLITZER
653-678

J. & W. Smallwood

435-410

157

City of Akron

182-601

100A

184-338

100A

126A

City of Akron

170-392

126

City of Akron

City of Akron

443-711

50A

29A

City of Akron

L. TUCKY
633-782

26 Ac

32.90 A

186-17
1.5A
City of Akron

8.50A

20A

444-769
574-456

50A

W. & U. Reid

694-642
K. Russell
D.K. O'REILLY
661-562

7000' A. Russell
5.0 Ac

K. Russell
D.K. O'REILLY
694-642

454-36
574-69
576-972
576-975
661-884
672-804

92A

D.L. & L.L. DETWILER
643-1129

J. STRAUSS

K. Russell
D.K. O'REILLY
694-642

218-594
R.F. HURD JR
667-215

193-439
2.160A

229-310
306-194
21.55A

City of AKRON
663-483

J. STRAUSS
69749

551-1230
72.96 Ac
69749

7.01 Ac

25.90 Ac.

546-1381

P.A. & N.L. LEUTY

519-647

115.50
City of Akron

184-339

74A

103.50 A
L & C POLITZER
653-678

J. & W. Smallwood

435-410

157

City of Akron

182-601

100A

184-338

100A

126A

City of Akron

170-392

126

City of Akron

City of Akron

443-711

50A

29A

City of Akron

L. TUCKY
633-782

26 Ac

32.90 A

186-17
1.5A
City of Akron

8.50A

20A

444-769
574-456

50A

W. & U. Reid

694-642
K. Russell
D.K. O'REILLY
661-562

7000' A. Russell
5.0 Ac

K. Russell
D.K. O'REILLY
694-642

454-36
574-69
576-972
576-975
661-884
672-804

92A

D.L. & L.L. DETWILER
643-1129

J. STRAUSS

K. Russell
D.K. O'REILLY
694-642

218-594
R.F. HURD JR
667-215

193-439
2.160A

229-310
306-194
21.55A

City of AKRON
663-483

J. STRAUSS
69749

551-1230
72.96 Ac
69749

7.01 Ac

25.90 Ac.

546-1381

P.A. & N.L. LEUTY

519-647

115.50
City of Akron

184-339

74A

103.50 A
L & C POLITZER
653-678

J. & W. Smallwood

435-410

157

City of Akron

182-601

100A

184-338

100A

126A

City of Akron

170-392

126

City of Akron

City of Akron

443-711

50A

29A

City of Akron

L. TUCKY
633-782

26 Ac

32.90 A

186-17
1.5A
City of Akron

8.50A

20A

444-769
574-456

50A

W. & U. Reid

694-642
K. Russell
D.K. O'REILLY
661-562

7000' A. Russell
5.0 Ac

K. Russell
D.K. O'REILLY
694-642

454-36
574-69
576-972
576-975
661-884
672-804

92A

D.L. & L.L. DETWILER
643-1129

J. STRAUSS

K. Russell
D.K. O'REILLY
694-642

218-594
R.F. HURD JR
667-215

193-439
2.160A

229-310
306-194
21.55A

City of AKRON
663-483

J. STRAUSS
69749

551-1230
72.96 Ac
69749

7.01 Ac

25.90 Ac.

546-1381

P.A. & N.L. LEUTY

519-647

115.50
City of Akron

184-339

74A

103.50 A
L & C POLITZER
653-678

J. & W. Smallwood

435-410

157

City of Akron

182-601

100A

184-338

100A

126A

City of Akron

170-392

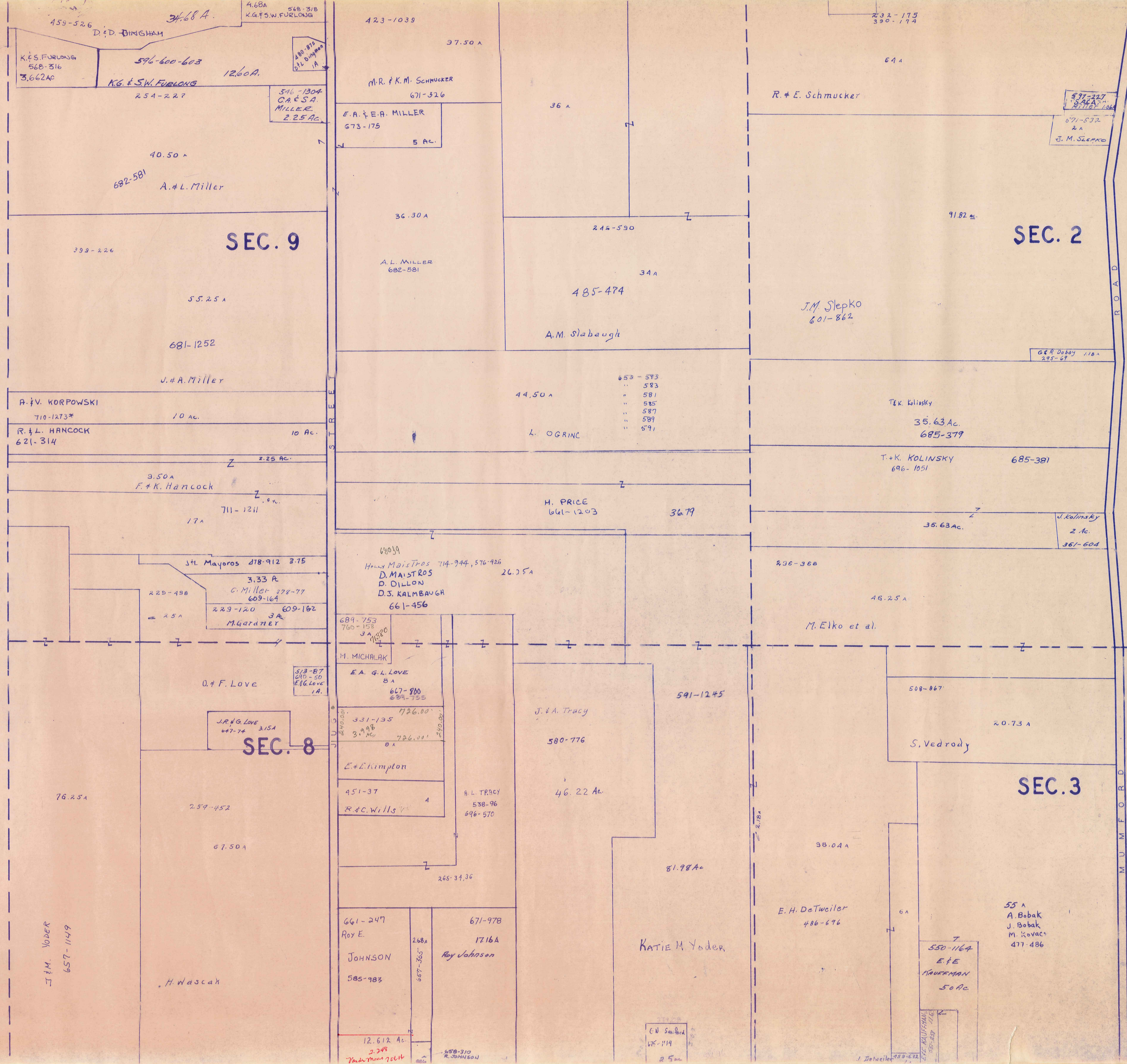
126

City of Akron

City of Akron

443-711

50A



SEC. 9

SEC. 8

SEC. 2

SEC. 3



SCALE 1"=300'
JAN. 1984

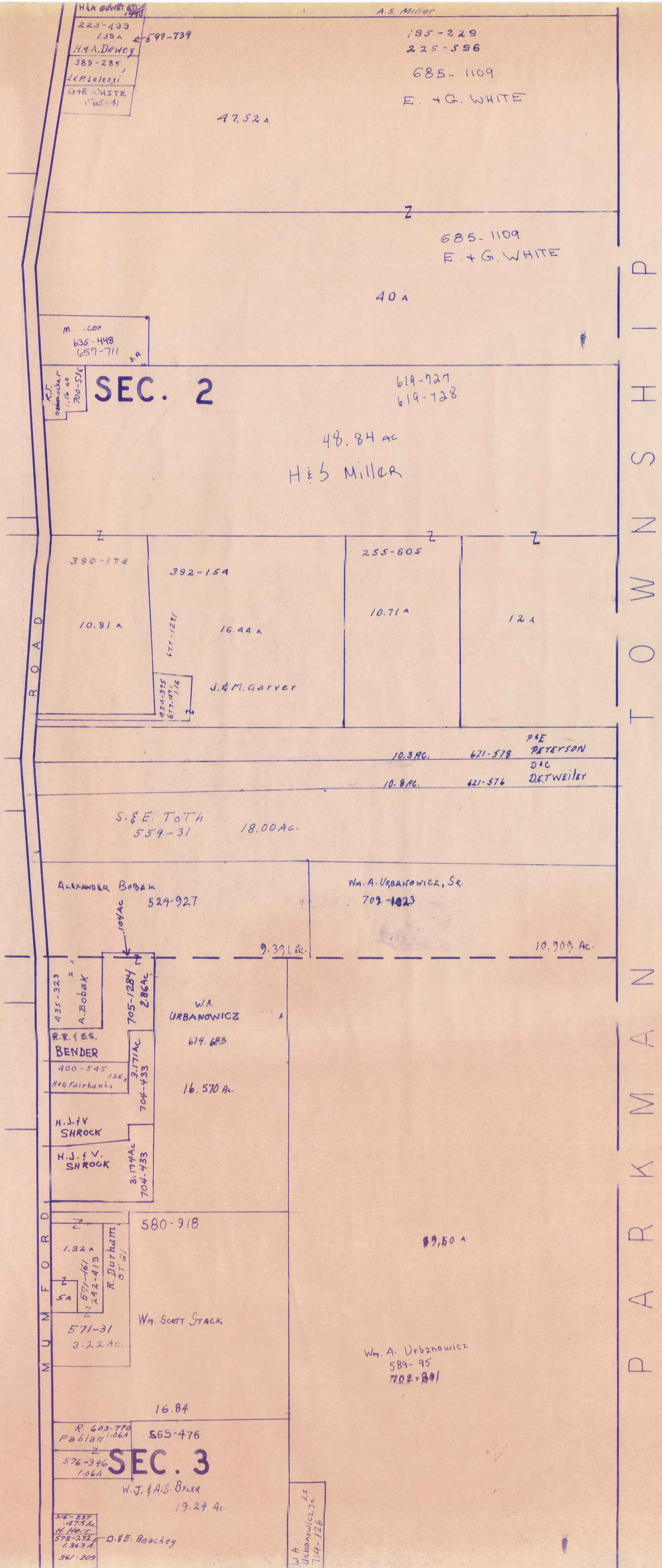
A	B	C	D
E	F	G	H
I	J	K	L
M	N	O	P

TROY TWP.

PRINTED
JUL 17 1984
GEORGIA COUNTY ENGINEER

ROAD

MUMFORD



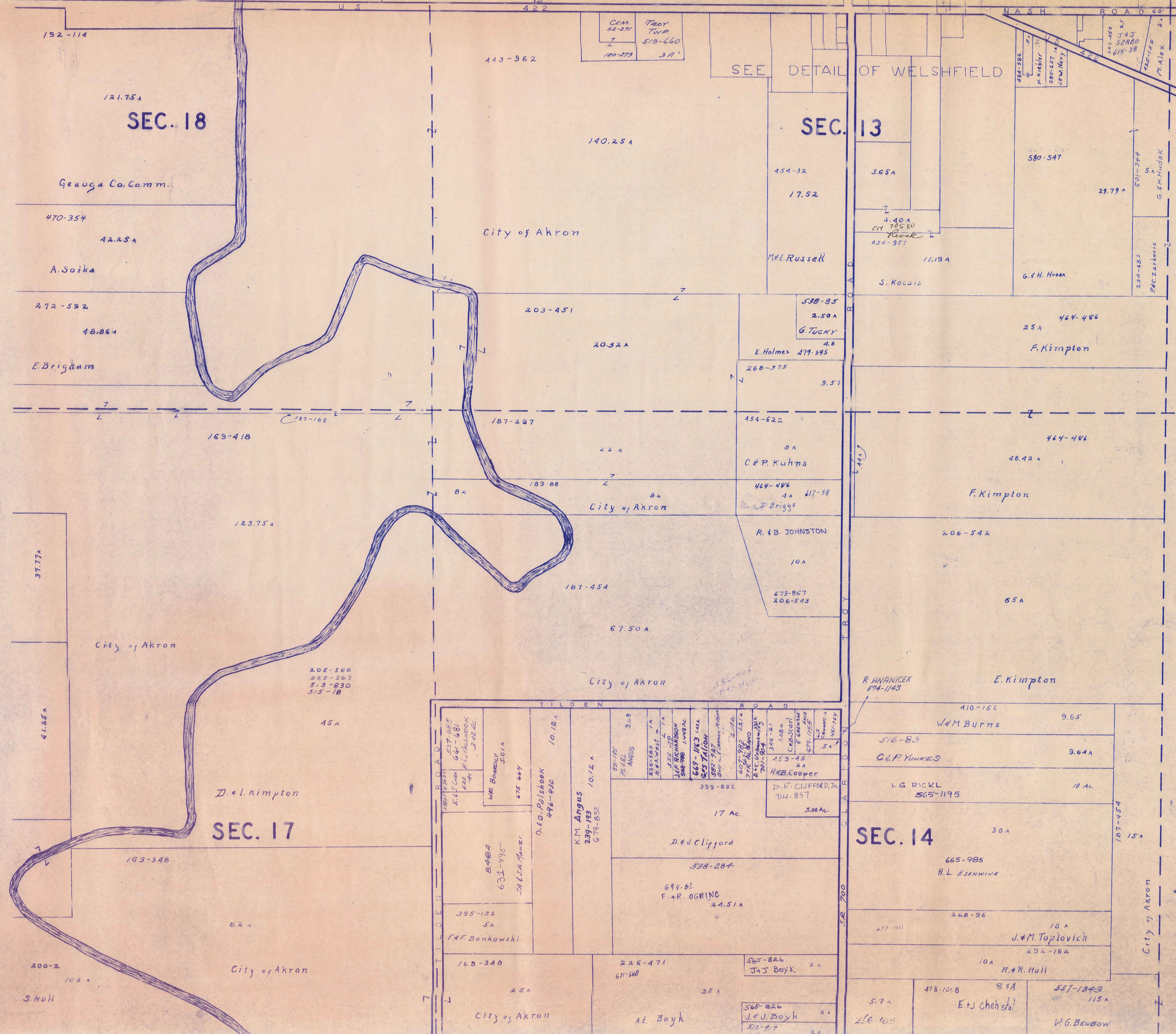
SCALE 1"=300'
JAN. 1984

A	B	C	D
E	F	G	H
I	J	K	L
M	N	O	P

TROY TWP.

PRINTED
JUL 17 1984
GENESA COUNTY ENGINEER

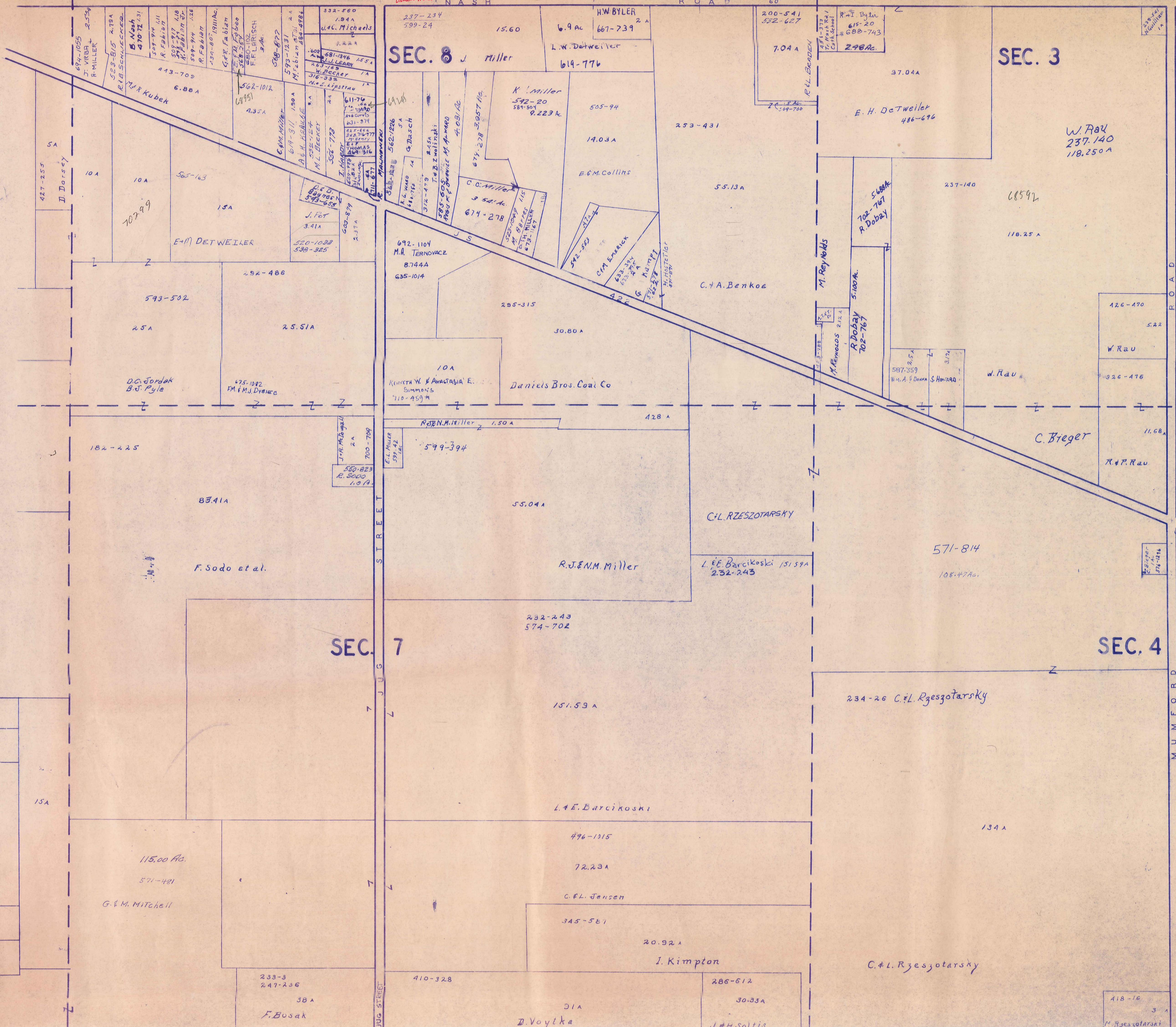
PRINTED
 JUL 17 1984
 GEORGIA COUNTY ENGINEER



SCALE 1"=300'
 JAN. 1984

A	B	C	D
E	F	G	H
I	J	K	L
M	N	O	P

TROY TWP



20614
Dashed lines

SEC. 8 J. Miller

SEC. 3

SEC. 7

SEC. 4

JUG STREET

MUMFORD ROAD



SCALE 1"=300'
JAN. 1984

A	B	C	D
E	F	G	H
I	J	K	L
M	N	O	P

TROY TWF

PRINTED
JUL 17 1984
GENAUA COUNTY ENGINEER

SA

15A

10A

10A

15A

25A

182-225

83.41A

15A

15A

15A

15A

15A

15A

15A

15A

15A

10A

10A

15A

25A

182-225

83.41A

15A

15A

15A

15A

15A

15A

15A

15A

15A

10A

10A

15A

25A

182-225

83.41A

15A

15A

15A

15A

15A

15A

15A

15A

15A

10A

10A

15A

25A

182-225

83.41A

15A

15A

15A

15A

15A

15A

15A

15A

15A

10A

10A

15A

25A

182-225

83.41A

15A

15A

15A

15A

15A

15A

15A

15A

15A

10A

10A

15A

25A

182-225

83.41A

15A

15A

15A

15A

15A

15A

15A

15A

15A

10A

10A

15A

25A

182-225

83.41A

15A

15A

15A

15A

15A

15A

15A

15A

15A

10A

10A

15A

25A

182-225

83.41A

15A

15A

15A

15A

15A

15A

15A

15A

15A

10A

10A

15A

25A

182-225

83.41A

15A

15A

15A

15A

15A

15A

15A

15A

15A

10A

10A

15A

25A

182-225

83.41A

15A

15A

15A

15A

15A

15A

15A

15A

15A

10A

10A

15A

25A

182-225

83.41A

15A

15A

15A

15A

15A

15A

15A

15A

15A

10A

10A

15A

25A

182-225

83.41A

15A

15A

15A

15A

15A

15A

15A

15A

15A

10A

10A

15A

25A

182-225

83.41A

15A

15A

15A

15A

15A

15A

15A

15A

15A

10A

10A

15A

25A

182-225

83.41A

15A

15A

15A

15A

15A

15A

15A

15A

15A

10A

10A

15A

25A

182-225

83.41A

15A

15A

15A

15A

15A

15A

15A

15A

15A

10A

10A

15A

25A

182-225

83.41A

15A

15A

15A

15A

15A

15A

15A

15A

15A

10A

10A

15A

25A

182-225

83.41A

15A

15A

15A

15A

15A

15A

15A

15A

15A

10A

10A

15A

25A

182-225

83.41A

15A

15A

15A

15A

15A

15A

15A

15A

15A

10A

10A

15A

25A

182-225

83.41A

15A

15A

15A

15A

15A

15A

15A

SEC. 3

237-552
509-390

69.23A

79A

559-107

532-1150
2.17A
A.M. Lieberman

W.R.O. Miller
496-969
2.17A

6.4m Lieberman
509-396 107A

239-454
179-416

71A

J. Remias

624-1177
E.P. Ellis Jr.

376-969 .86
R.V. Tideman

665-1108
R.V. MITCHELL

587-278 591-100
W. G. Giel

580-725
E. A. Hudak

611-1260
575-1055
430-26

711 SUMMERS 7.05A

W. HANEY
A. MILLER
712-199 1AC

243-112
W.M. Reed

392-327
11.33A
A. Oliver

387-419
524-274
14.50A
P. & S. Duralia

B.L. BLAINE
670-925 100
R. MURPHY
574 366

596-932
W. E. STARK
19.39Ac.

7.26Ac. W.D. & F.T. STARK 546-935
265-301 334A

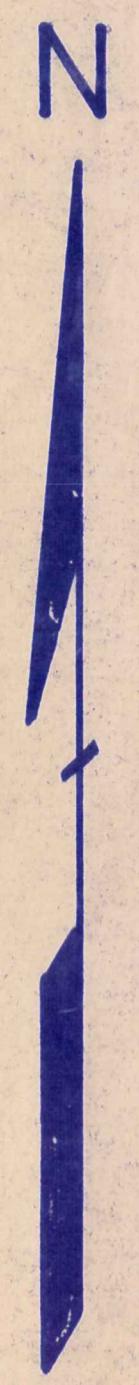
682-491
C. Dyson

213-526
3.08A
J. Nonakovski
D.E. & M.A. ANNA
552-72
32.86Ac.

SEC. 4

T O W N S H I P
P A R K M A N

N A S H
R O A D
60'



SCALE 1"=300'
JAN. 1984

A	B	C	D
E	F	G	H
I	J	K	L
M	N	O	P

TROY TWF

PRINTED
JUL 17 1984
GENUINA COUNTY ENGINEER

A
U
B
U
R
N
S
H
I
P
R
O
A
D

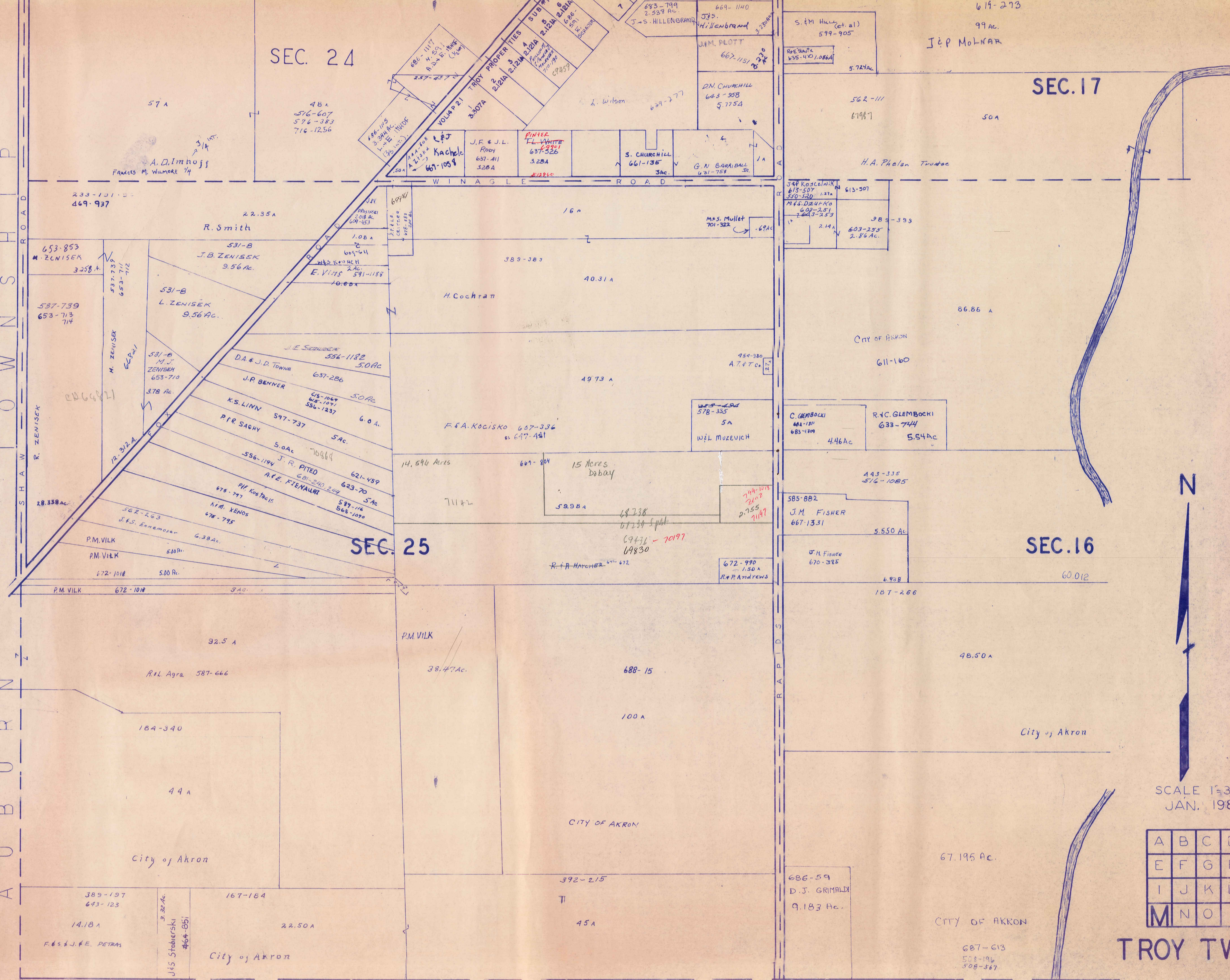
PRINTED
JUL 17 1984
GEAUGA COUNTY ENGINEER

SEC. 24

SEC. 17

SEC. 25

SEC. 16

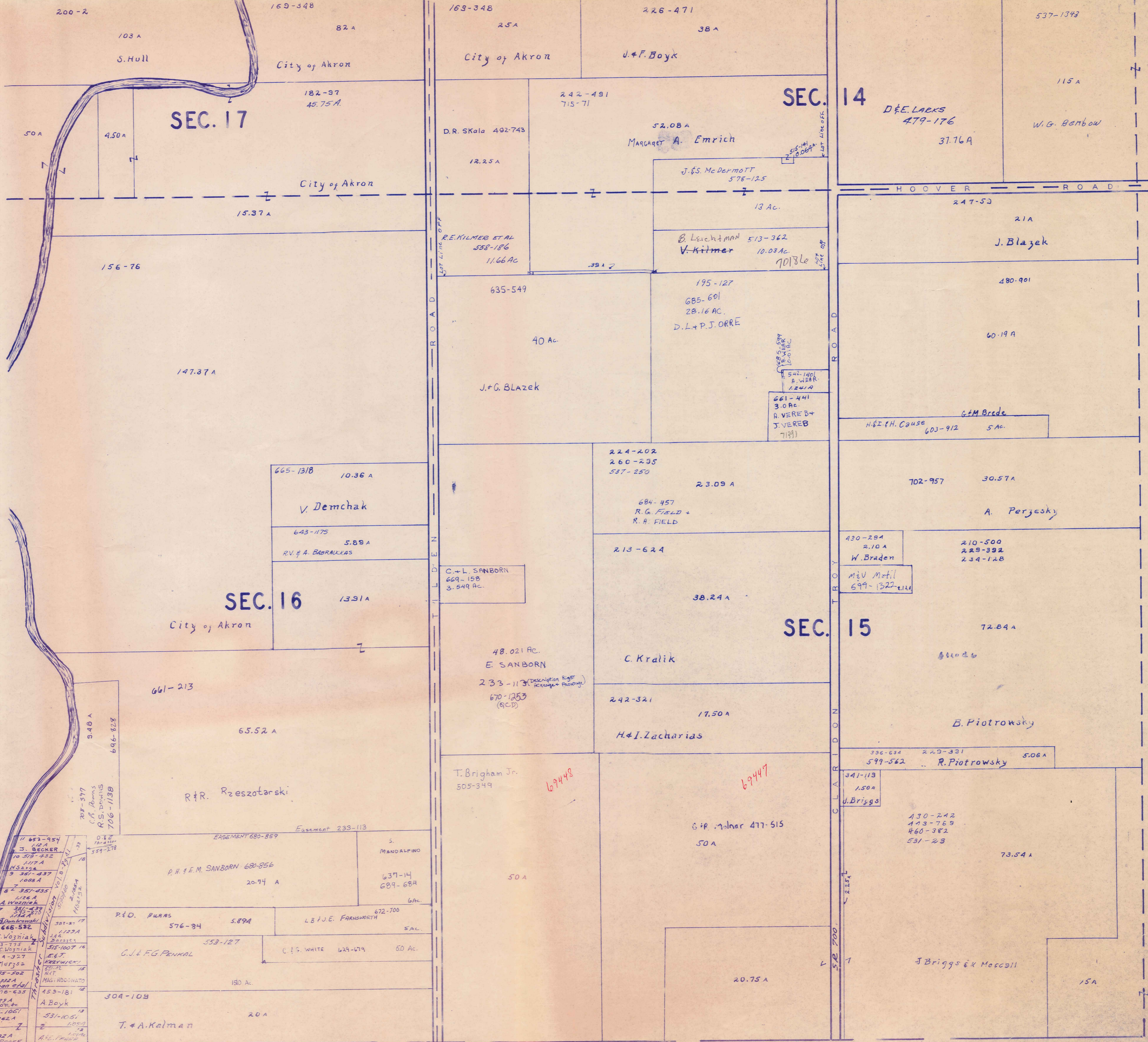


SCALE 1"=300'
JAN. 1984

A	B	C	D
E	F	G	H
I	J	K	L
M	N	O	P

TROY TWP

P O R T A G E C O U N T Y



SCALE 1"=300'
 JAN. 1984

A	B	C	D
E	F	G	H
I	J	K	L
M	N	O	P

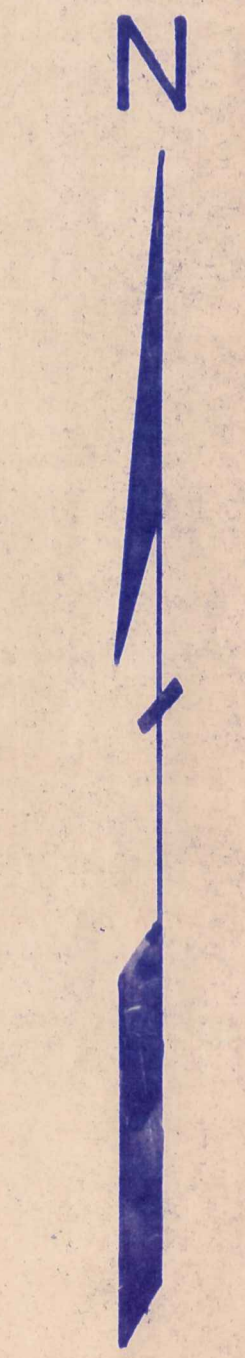
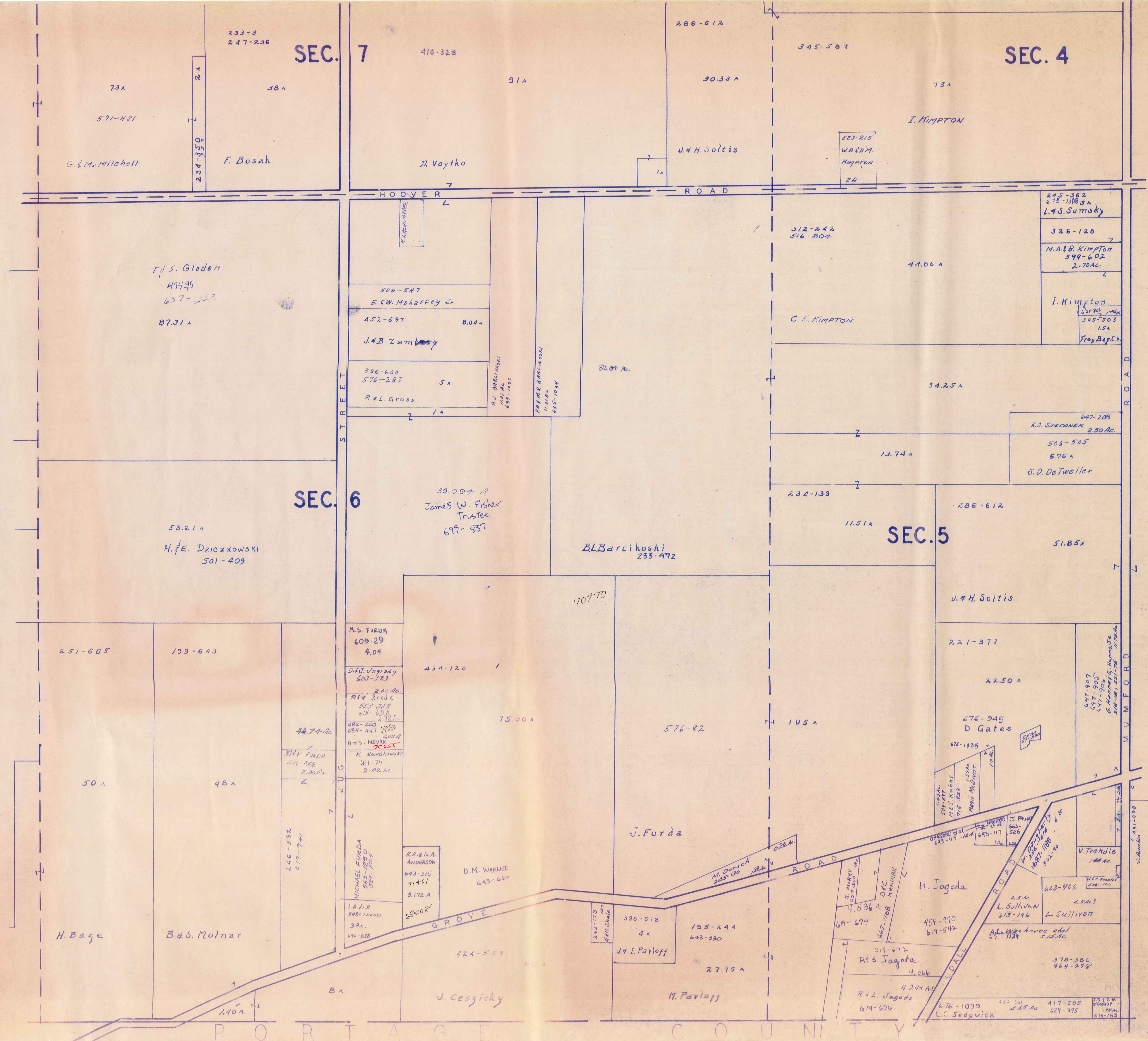
T ROY TWP

PRINTED
 JUL 17 1984
 GENOA COUNTY ENGINEER

11	652-954	18	0.32	MANDALPINO
12	62 A	19	1.8	637-14
13	3. BECHER	20	1.8	689-684
14	10 318-332	21	1.8	6AC
15	1117 A	22	1.8	672-700
16	H.S. 114	23	1.8	5AC
17	9 307-437	24	1.8	50 AC.
18	1088 A	25	1.8	50 AC.
19	6 351-435	26	1.8	180 AC.
20	1126 A	27	1.8	20 A
21	A. Wozniak	28	1.8	
22	351-435	29	1.8	
23	1122 A	30	1.8	
24	2323 C1	31	1.8	
25	515-1007 1A	32	1.8	
26	504 A-327	33	1.8	
27	A. & E. MURPHY	34	1.8	
28	385-502	35	1.8	
29	1322 A	36	1.8	
30	E. Pleban et al	37	1.8	
31	370-635	38	1.8	
32	129 A	39	1.8	
33	J. McTOWN	40	1.8	
34	2 531-1051	41	1.8	
35	1262 A	42	1.8	
36	1232 A	43	1.8	
37	A. & S. POPE	44	1.8	

P O R T A G E C O U N T Y

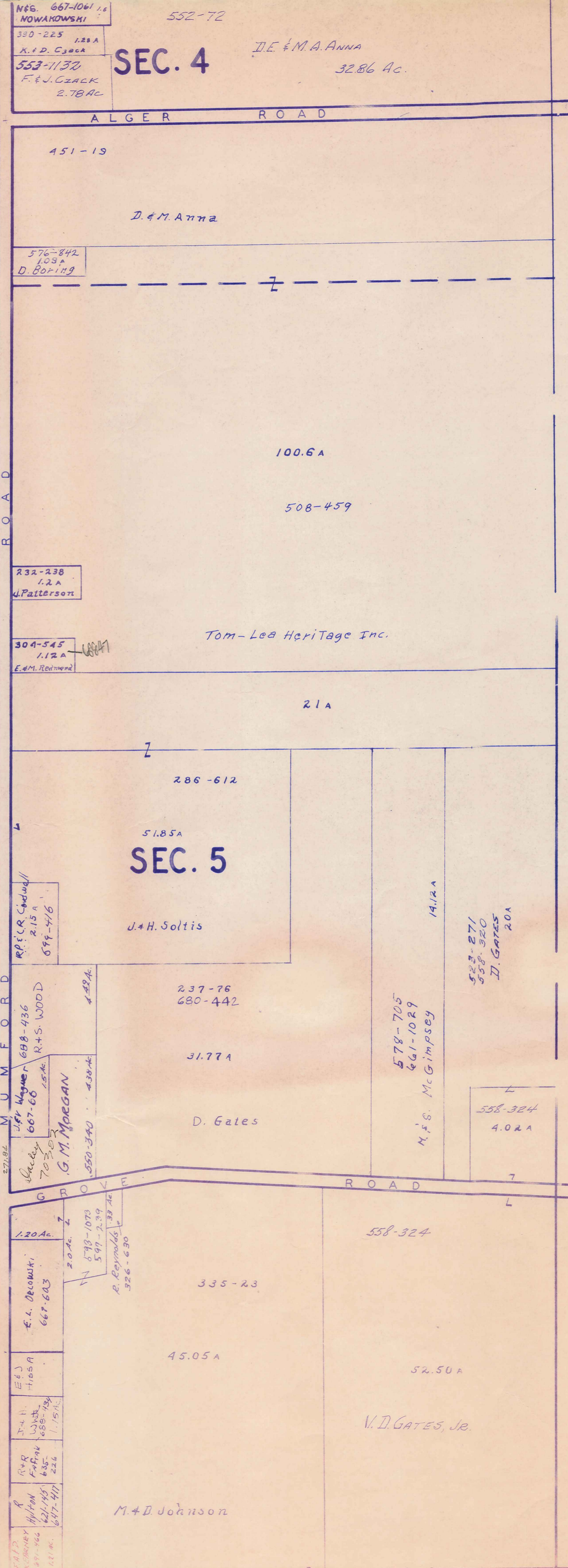
PRINTED
JUL 17 1984
SANDIA COUNTY ENGINEER



SCALE 1"=300'
JAN. 1984

A	B	C	D
E	F	G	H
I	J	K	L
M	N	O	P

TROY TWP



N66. 667-1061 1/2
NOWAKOWSKI
330-225 1.28 A
K. P. D. C. J. C. A.
553-1130
F. J. G. A. C. K.
2.78 AC

SEC. 4

D.E. & M.A. ANNA
32.86 AC.

ALGER ROAD

MUMFORD ROAD

G.D. ROAD

P
A
R
K
M
A
N
T
O
W
N
S
H
I
P

SEC. 5

P O R T A G E C O U N T Y

PRINTED
JUL 17 1984
GENEVA COUNTY ENGINEER



SCALE 1" = 300'
JAN 1984

A	B	C	D
E	F	G	H
I	J	K	L
M	N	O	P

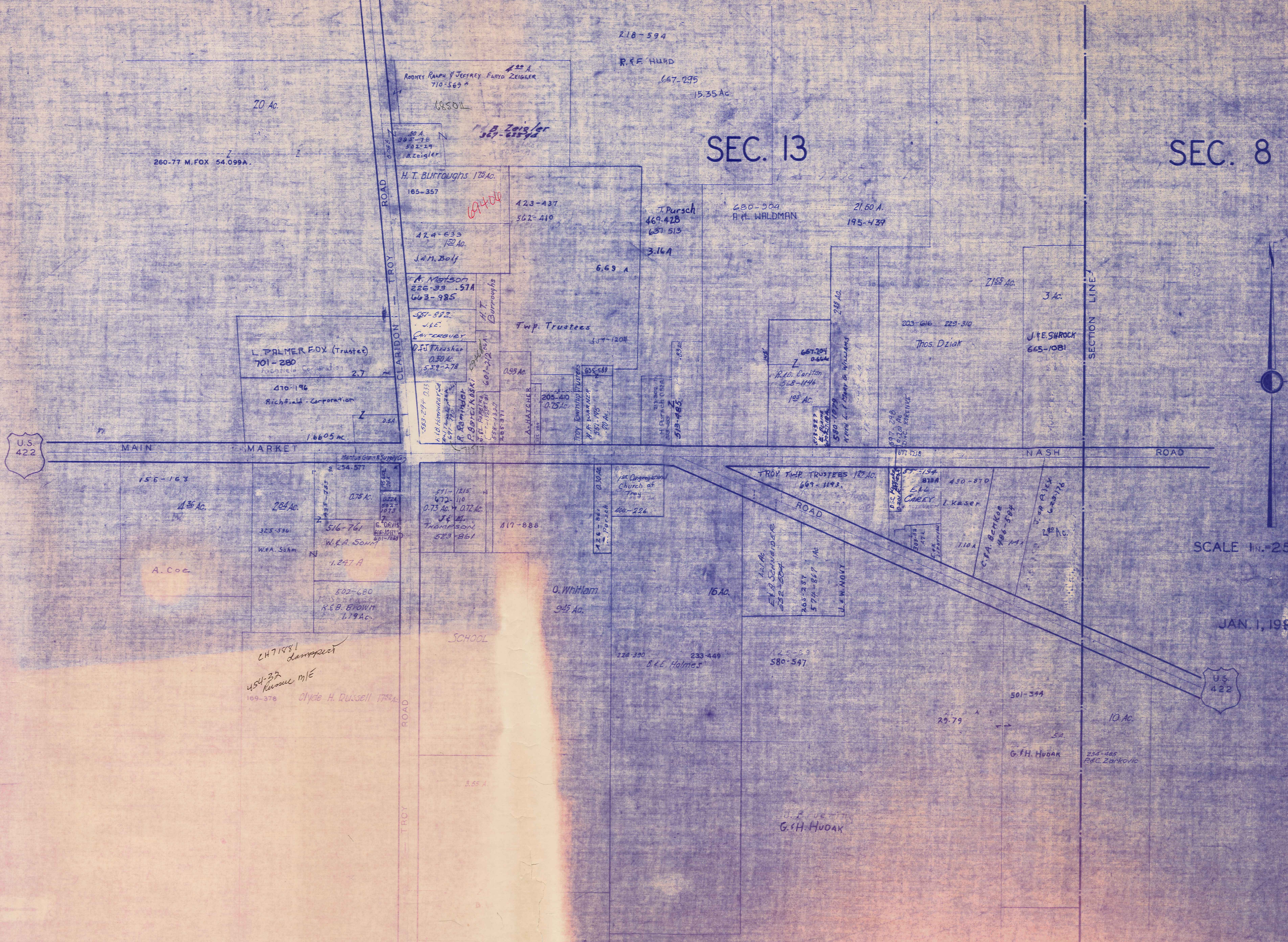
TROY TWF

WELSHFIELD
SEC. 13

TROY TP.

WELSHFIELD
SEC. 13

700



SEC. 8

U.S. 422

SCALE 1" = 25' = 165'

JAN. 1, 1994

U.S. 422

PRINTED
JUL 17 1984
GENWA COUNTY ENGINEER